

AVAILABLE FOR LEASE

# 1333

BROADWAY



1333 BROADWAY | CITY CENTER | OAKLAND, CA

 **SWIFT**  
REAL ESTATE PARTNERS

**CBRE**



URBAN EATS,  
CULTURE &  
ENTERTAINMENT  
IN OAKLAND



# PROPERTY PROFILE

1333 Broadway is located in vibrant downtown Oakland. Oakland's City Center is one of the city's most concentrated business and shopping centers, home to an abundant number of restaurants and shops.

## FACTS & STATS

- + CLASS A OFFICE TYPE
- + ON-SITE SECURITY
- + 10 STORIES
- + FIVE PASSENGER ELEVATORS
- + HVAC
- + FULL SPRINKLERS
- + LOCALLY BASED, VERTICALLY INTEGRATED OWNER/OPERATOR

## AMENITIES

- + LOCATED IN THE VIBRANT CITY CENTER SUBMARKET
- + 100 STEPS TO 1,700 STALL COVERED PUBLIC PARKING GARAGE
- + EASY ACCESS TO I-980
- + BUILDING IS ON TOP OF THE 12TH ST. BART ENTRANCE AND WALKING DISTANCE TO AC TRANSIT
- + DOZENS OF SHOPPING AND DINING OPTIONS NEARBY
- + HIGHEST IN EAST BAY FOR BART RIDERSHIP WITH  $\pm$ 13,000 DAILY RIDERS
- + 5,000 HIGH END RESIDENTIAL UNITS RECENTLY COMPLETED WITHIN A MILE










**ENERGY STAR**  
Labeled

# LOCAL AMENITIES



### TRANSPORTATION KEY

-  BART
-  Amtrak Station
-  SF Bay Ferry station
-  City Parking
-  Bike Lockers
-  On-site bike parking
-  Free B shuttle routes/stops

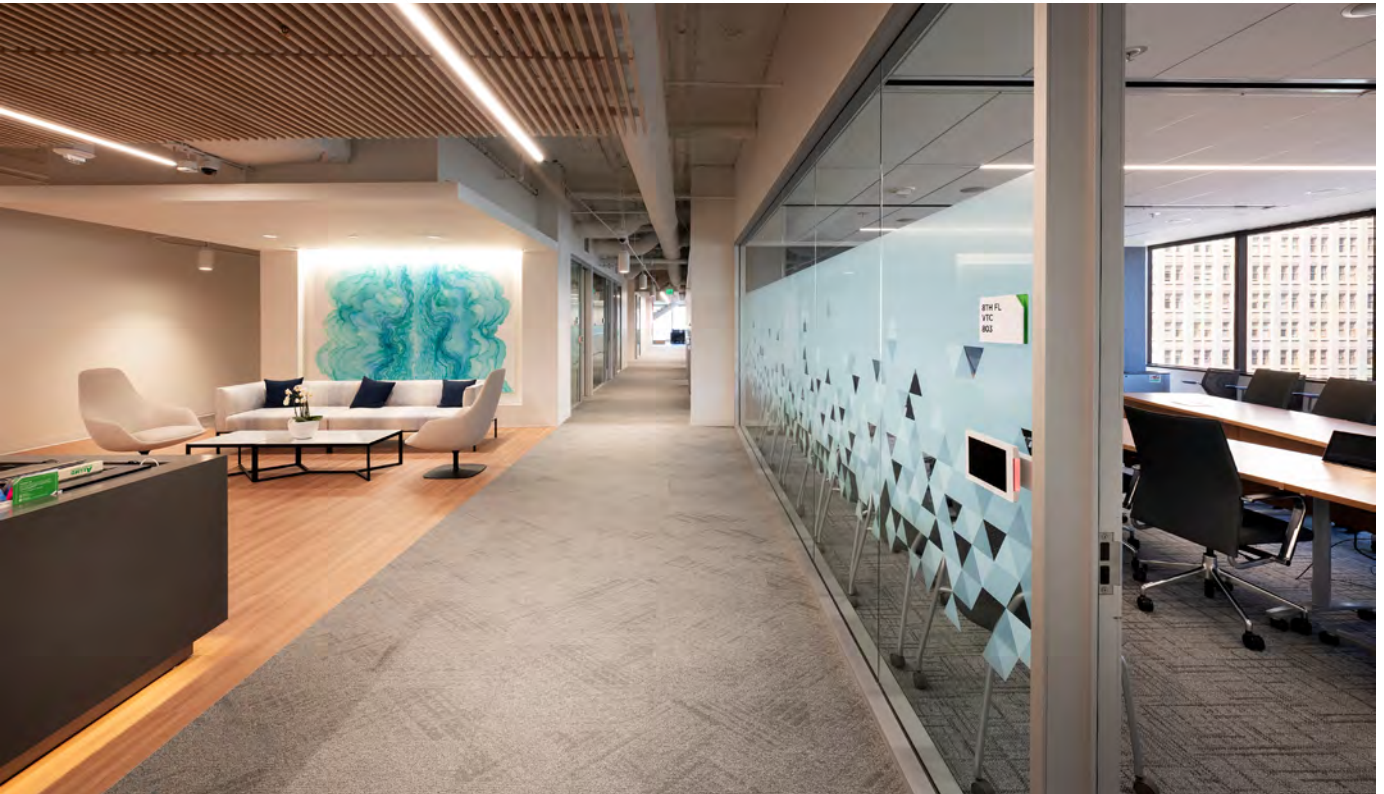
**1333 BROADWAY**



# INTERIOR PHOTOS



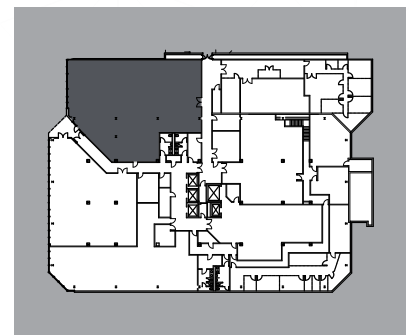
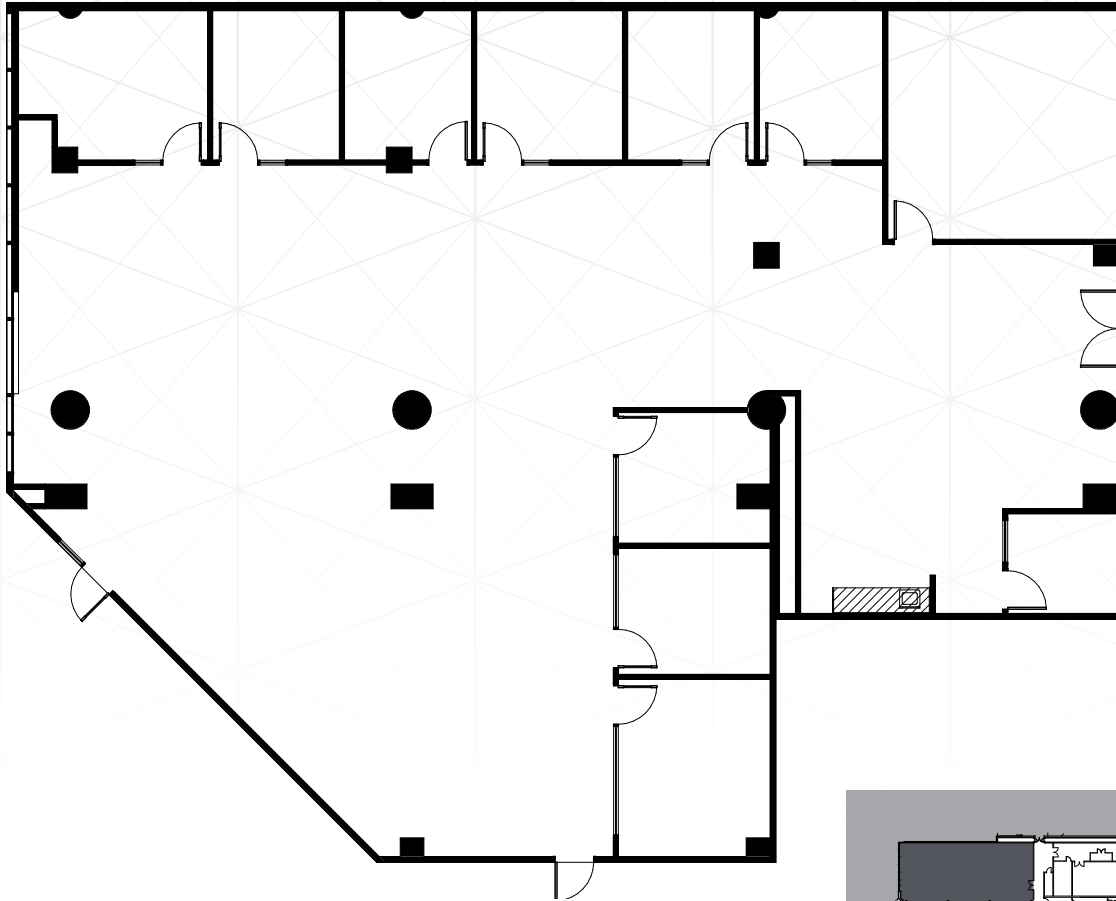
# INTERIOR PHOTOS



# FLOOR PLAN

## SUITE P-110 / ±6,135 SF

AVAILABLE NOW



## CONTACT INFORMATION

**TRENT HOLSMAN**  
Senior Vice President  
Lic. 01449957  
+1 510 874 1951  
trent.holsman@cbre.com

**SCOTT GREENWOOD**  
Senior Vice President  
Lic. 01330561  
+1 510 874 1950  
scott.greenwood@cbre.com



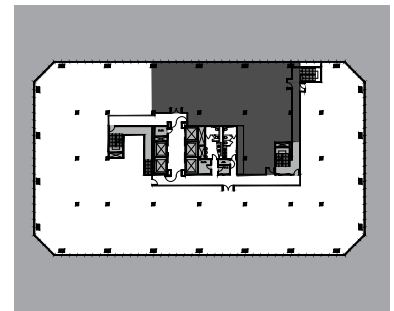
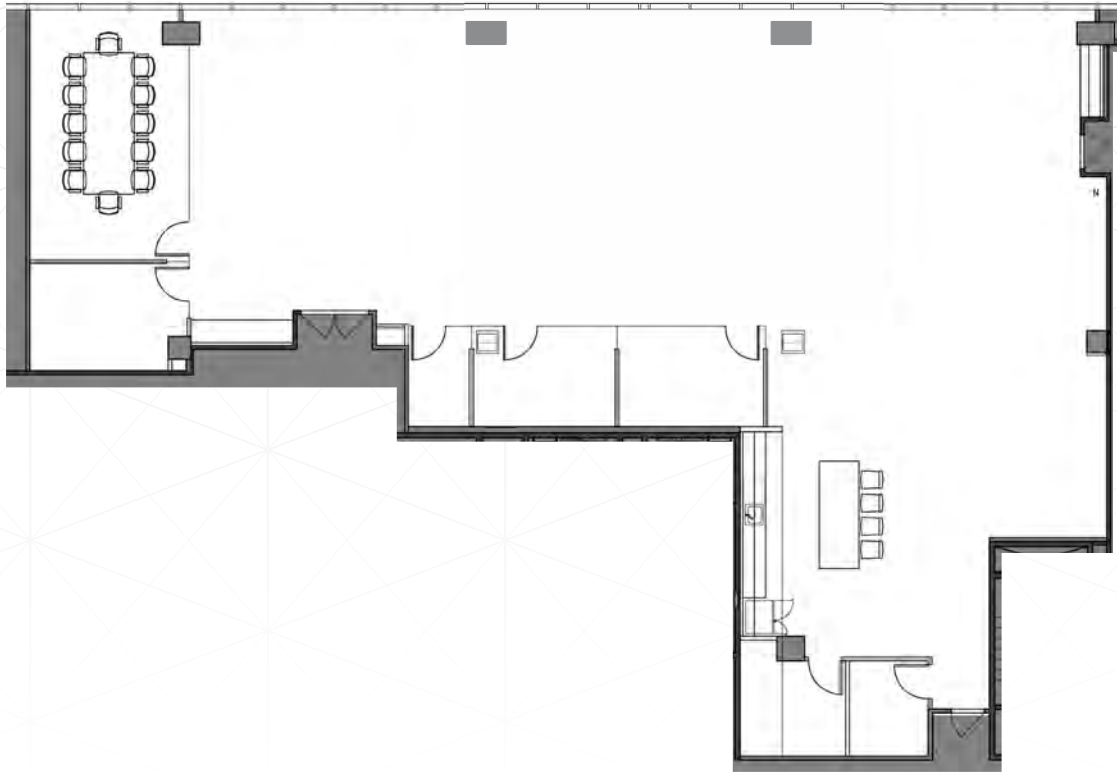
# FLOOR PLAN

SUITE 210 / ±5,117 SF

AVAILABLE NOW



## CREATIVE SPEC SUITE



## CONTACT INFORMATION

### TRENT HOLSMAN

Senior Vice President  
Lic. 01449957  
+1 510 874 1951  
trent.holsman@cbre.com

### SCOTT GREENWOOD

Senior Vice President  
Lic. 01330561  
+1 510 874 1950  
scott.greenwood@cbre.com

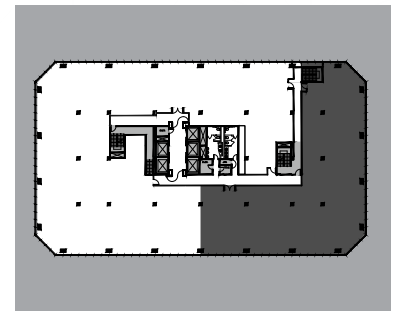
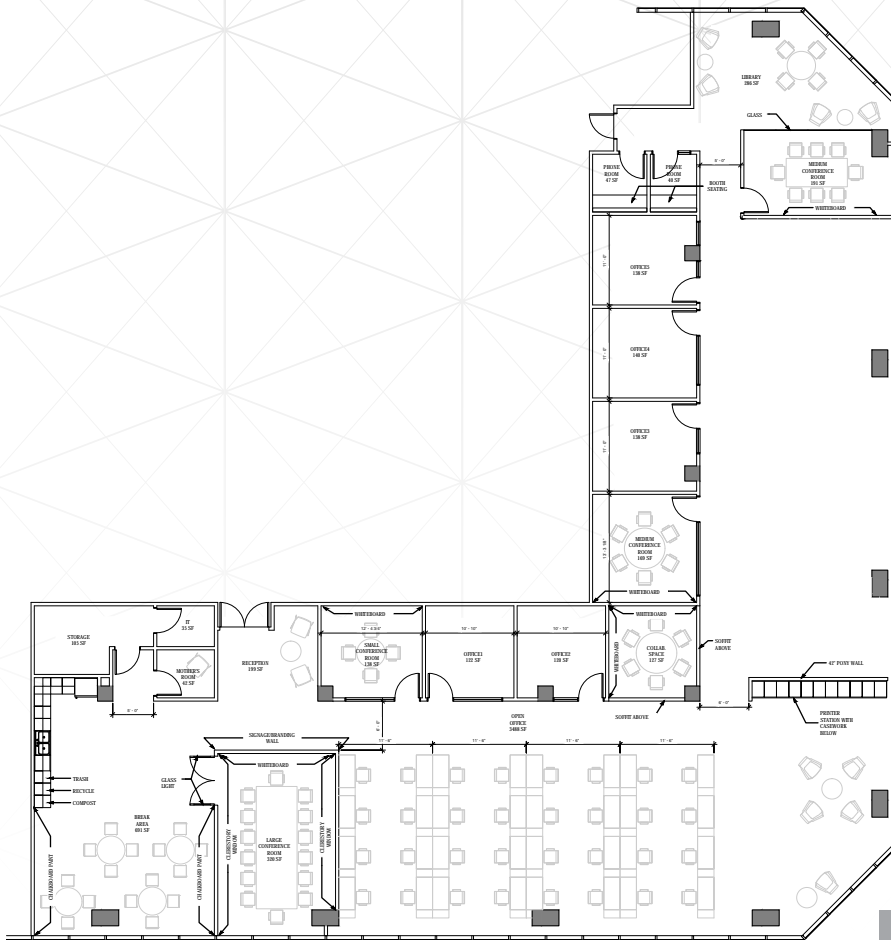
# SUITE 210 INTERIOR PHOTOS



# FLOOR PLAN

## SUITE 250 / ±8,274 SF

AVAILABLE 6/1/23



## CONTACT INFORMATION

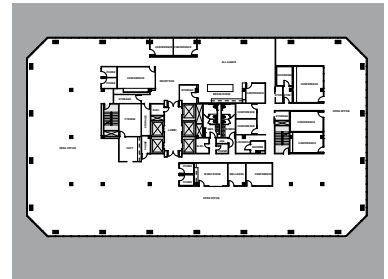
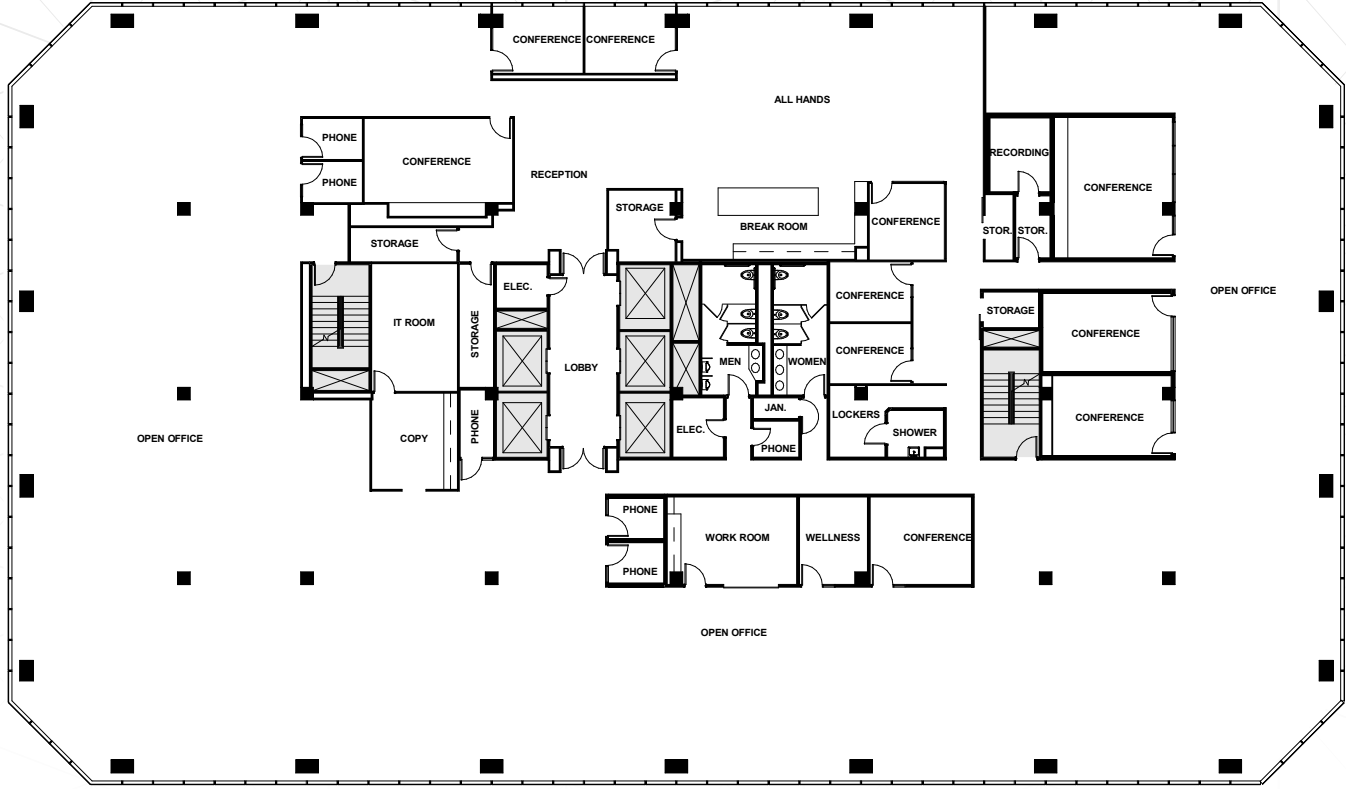
**TRENT HOLSMAN**  
Senior Vice President  
Lic. 01449957  
+1 510 874 1951  
trent.holsman@cbre.com

**SCOTT GREENWOOD**  
Senior Vice President  
Lic. 01330561  
+1 510 874 1950  
scott.greenwood@cbre.com

# FLOOR PLAN

## SUITE 600 / ±24,511 SF

AVAILABLE NOW - FULL FLOOR OPPORTUNITY



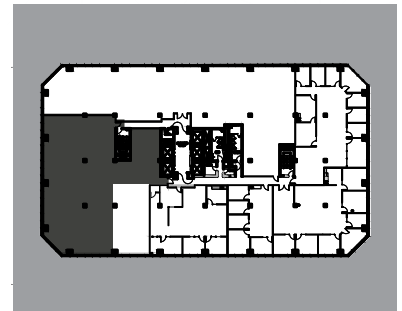
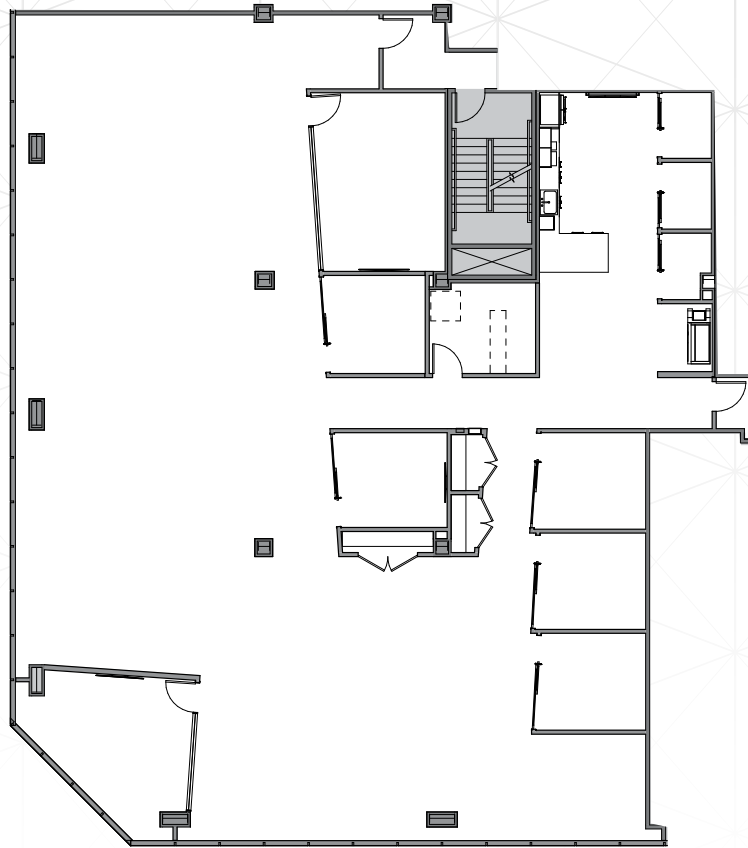
## CONTACT INFORMATION

**TRENT HOLSMAN**  
Senior Vice President  
Lic. 01449957  
+1 510 874 1951  
trent.holsman@cbre.com

**SCOTT GREENWOOD**  
Senior Vice President  
Lic. 01330561  
+1 510 874 1950  
scott.greenwood@cbre.com

# FLOOR PLAN

SUITE 1010 / ±6,605 SF  
AVAILABLE NOW



## CONTACT INFORMATION

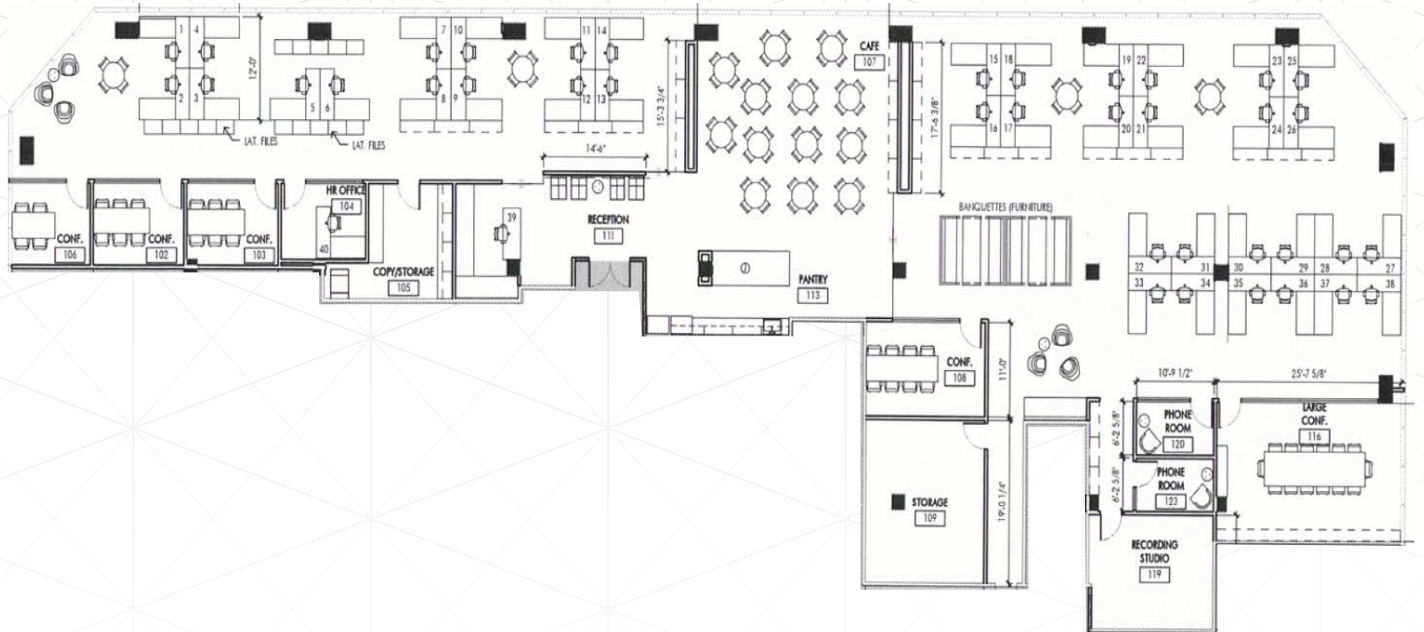
**TRENT HOLSMAN**  
Senior Vice President  
Lic. 01449957  
+1 510 874 1951  
trent.holsman@cbre.com

**SCOTT GREENWOOD**  
Senior Vice President  
Lic. 01330561  
+1 510 874 1950  
scott.greenwood@cbre.com

# FLOOR PLAN

## SUITE 1000 / ±10,226 SF

AVAILABLE NOW



## CONTACT INFORMATION

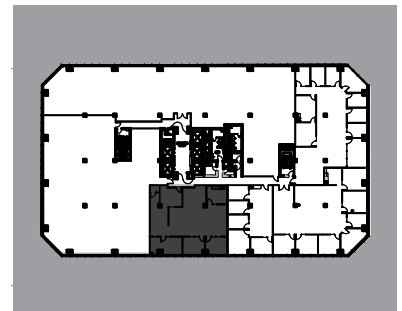
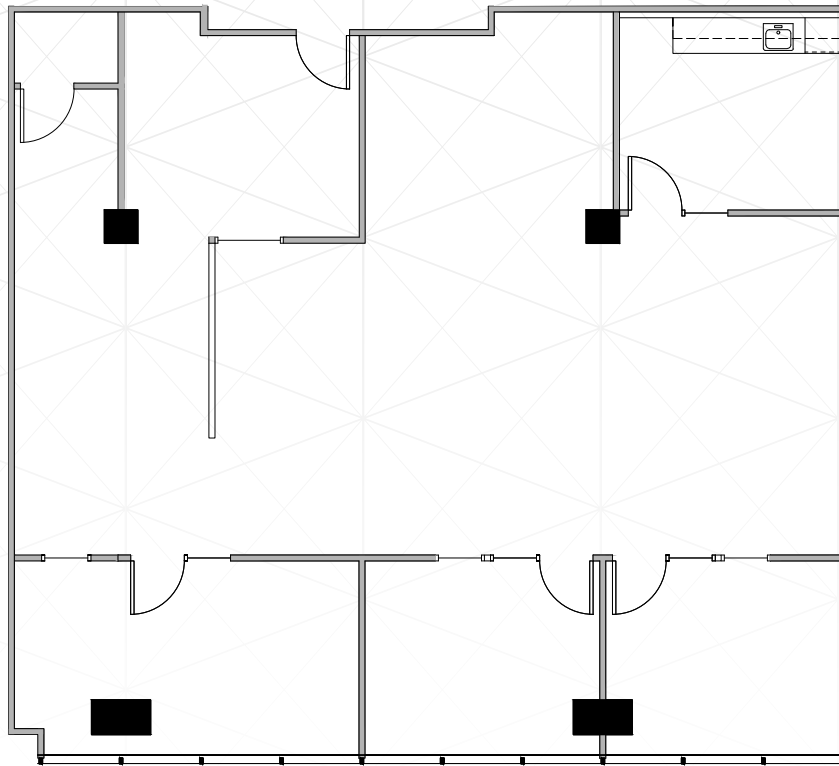
**TRENT HOLSMAN**  
Senior Vice President  
Lic. 01449957  
+1 510 874 1951  
trent.holsman@cbre.com

**SCOTT GREENWOOD**  
Senior Vice President  
Lic. 01330561  
+1 510 874 1950  
scott.greenwood@cbre.com

# FLOOR PLAN

## SUITE 1020 / ±2,228 SF

AVAILABLE NOW



## CONTACT INFORMATION

**TRENT HOLSMAN**  
Senior Vice President  
Lic. 01449957  
+1 510 874 1951  
trent.holsman@cbre.com

**SCOTT GREENWOOD**  
Senior Vice President  
Lic. 01330561  
+1 510 874 1950  
scott.greenwood@cbre.com

# 1333

BROADWAY

## CONTACT INFORMATION

### **TRENT HOLSMAN**

Senior Vice President  
Lic. 01449957  
+1 510 874 1951  
trent.holsman@cbre.com

### **SCOTT GREENWOOD**

Senior Vice President  
Lic. 01330561  
+1 510 874 1950  
scott.greenwood@cbre.com

### **CBRE, INC.**

1111 Broadway Suite 1850  
Oakland, CA 94607  
CBRE.com/Oakland



Headquartered in San Francisco, Swift Real Estate Partners ("Swift") is a vertically integrated real estate investment firm operating in select West Coast markets. Swift acquires and repositions office and industrial assets, identifying unique opportunities and executing well-defined business plans while providing real-time, day-to-day oversight for each investment. Since inception, Swift has owned and operated real estate valued in excess of \$3 billion across more than eight million square feet. Swift's professionals bring experience encompassing all aspects of real estate investment and management, including acquisition, financing, leasing, disposition, construction management, property management and creative and marketing services. Swift was founded in 2010 by Christopher Peatross.